



iluma
PRIVATE ESTATE



Lot 463 | Serpens St

House and Land Package

Stinson



Express Living Homes

Price From \$431,980** Frontage 10.5m SQM 315sqm

Features

- Large Double Garage
- Master Bedroom with ensuite & walk-in robe
- Open plan living space with adjoining alfresco

Ask about our Landscaping & Fencing Extras***!

See www.iluma.mirvac.com/Promotions for the terms and conditions of this offer.

Contact *Fran Wallis* from Iluma on 0409 220 787 or *Paul Pavlovich* Express Living on 0411 223 948.

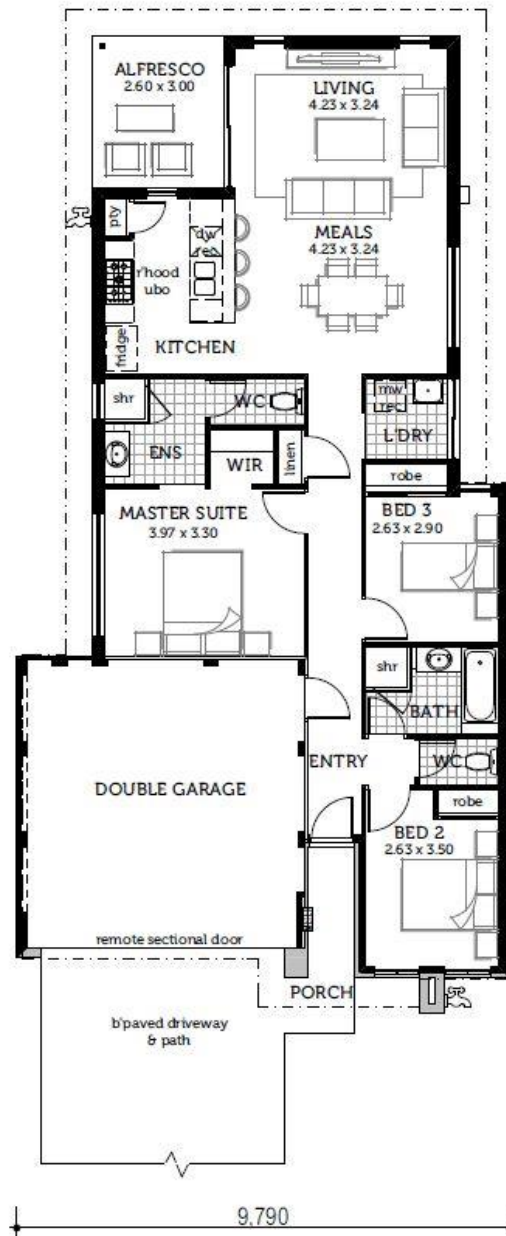
Iluma Private Estate Sales & Information Centre
Corner Luminous Boulevard and Pegasus Road
Bennett Springs, WA, 6063

T 0409 220 787
www.iluma.mirvac.com

Express Living
HOMES



iluma
PRIVATE ESTATE
by mirvac



House and land sold separately. Land sold by Mirvac WA Pty Ltd. Buyers must enter into a separate contract with the builder and the builder is responsible for all matters relating to the building contract and the house. Buyers should review the land and building contracts carefully, obtain independent advice before proceeding and make their own enquiries. Illustration and artist's impressions of buildings, interiors and views are intended to be indicative only and may include upgrade items above standard specifications. Package includes land price, base home price and site works allowance, and is indicatively only and subject to change (including increase). Site works allowance can only be finalised following a survey to be carried out by the builder (at your cost). Other costs and fees are payable in addition to those quoted including transfer/stamp duty, settlement fees, registration fees, legal fees, finance costs, site works, consultants' fees, survey fees, approvals, service connections and variations. Mirvac reserves the right to withdraw or alter any package at any time without notice in its absolute discretion. See iluma.mirvac.com for full terms and conditions. Produced 12 March 2019.